

LED COMPONENT & INDICATOR GUIDE

Marl has been adapting LED technology to provide innovative, stylish and functional indicator solutions for more than four decades. Supported by world class in-house design and manufacturing facilities, Marl is recognised internationally as industry pioneers and experts acknowledge a product offering that is synonymous with high performance and quality. We proudly design and manufacture all of our components and indicators from our base in Cumbria, UK.

Generic features include high intensity colours, wide range of operating voltage options, (including a bi-polar range), high quality materials and ruggedised construction methods to ensure reliability for a wide range of demanding applications. Marl LED components enhance the quality, performance and reliability of the host equipment, optimising the man machine interface and user experience. They are ideal for professional applications, including defence, aerospace, rail and specialised industrial markets, such as processing and automation plant, fire and security and mobile equipment.



PCB MOUNTING LEDs



103 SERIES

- Ø3.0mm diffused LED
- 90° single moulded housing
- Range of LED colours
- Range of voltage options
- Low current options available
- UL94 V-0 flammability rating
- Reverse polarity options available



104 SERIES

- Ø5.0mm diffused LED
- 90° single moulded housing
- Range of LED colours
- Bi-colour options available
- Range of voltage options
- Low current options available
- UL94 V-0 flammability rating



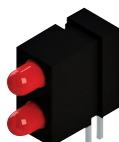
109 SERIES

- Ø3.0mm diffused LED
- 90° duplex moulded housing
- Range of LED colours
- Bi-colour options available
- Range of voltage options
- Low current options available
- UL94 V-0 flammability rating



113 SERIES

- Ø3.0mm diffused LED
- 90° single moulded housing
- Range of LED colours
- Range of voltage options
- Low current options available
- UL94 V-0 flammability rating
- Reverse polarity options available



122 SERIES

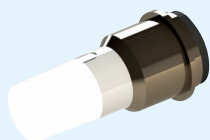
- Ø3.0mm diffused LED
- 90° duplex moulded
- Housing range of LED colours
- Bi-colour options available
- Low current options available
- Suitable for auto-insertion
- UL94 V-0 flammability rating



151 SERIES

- Ø5.0mm diffused LED
- 90° single moulded housing
- Red/green bi-colour LED
- Red/amber/green tri-colour LED
- Diffused lens - wide angle viewing
- UL94 V-0 flammability rating
- Reduced power consumption

LED BULB REPLACEMENTS



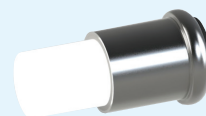
202 SERIES

- T1 midget flange SX3s
- Range of LED colours
- High intensity LEDs, flat topped
- Wide viewing angle for switches
- Internal resistor - voltage options
- Centre contact Anode as standard
- Reverse polarity options available



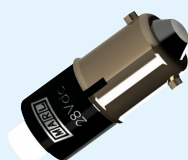
205 SERIES

- T1¾ midget groove S5.7s
- Range of LED colours
- High intensity LEDs, flat topped
- Wide viewing angle for switches
- Internal resistor - voltage options
- Centre contact Anode as standard
- Reverse polarity options available



206 SERIES

- T1¾ midget flange SX6s
- Range of LED colours
- High intensity LEDs, flat topped
- Wide viewing angle for switches
- Internal resistor - voltage options
- Centre contact Anode as standard
- Reverse polarity options available



215 SERIES

- T3¼ bayonet automobile cap BA9s
- Range of LED colours
- High intensity LEDs, flat topped
- Wide viewing angle
- Internal resistor - voltage options
- Centre contact Anode as standard
- Reverse polarity options available



225 SERIES

- BA15d mounting cap
- Range of LED colours
- 6 high intensity LEDs, multi-cluster
- Narrow viewing angle
- Internal resistor - voltage options
- Bi-polar termination
- Durable to shock and vibration



255 SERIES

- T3¼ bayonet automobile cap BA9s
- Range of LED colours
- High intensity LEDs, flat topped
- Wide viewing angle
- Voltage input: 8 - 48Vac/DC
- Bi-polar termination
- Durable to shock and vibration



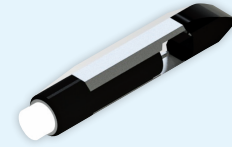
235 SERIES

- T1¼ midget groove S5.7s
- Range of LED colours
- Surface mount LED technology
- Wide viewing angle for switches
- Internal resistor - voltage options
- Bi-polar AC/DC termination
- Durable to shock and vibration



236 SERIES

- T1¼ midget flange SX6s
- Range of LED colours
- Surface mount LED technology
- Wide viewing angle for switches
- Internal resistor - voltage options
- Bi-polar AC/DC termination
- Durable to shock and vibration



258 SERIES

- T6.8 slide base
- Range of LED colours
- High intensity LEDs, flat topped
- Wide viewing angle
- Voltage input: 8 - 48Vac/DC
- Bi-polar termination
- Durable to shock and vibration

SEALED LED PANEL INDICATORS



508 SERIES

- Ø8.1mm mounting
- Bright nickel plated brass housing
- Smoked lens - good on/off ratio
- High intensity LED colours
- Internal resistor - voltage options
- Sealed to IP67 - weatherproof
- Durable to shock and vibration



512 SERIES

- Ø12.7mm (½") mounting
- Bright nickel plated brass housing
- Smoked lens - good on/off ratio
- High intensity LED colours
- Internal resistor - voltage options
- Sealed to IP67 - weatherproof
- Durable to shock and vibration



514 SERIES

- Ø12.7mm (½") mounting
- Bright nickel plated brass housing
- Raised coloured diffused lens
- Range of LED colours
- Internal resistor - voltage options
- Sealed to IP67 - weatherproof
- Durable to shock and vibration



520 SERIES

- Ø6.1mm countersunk mounting
- Robust stainless steel housing
- Coloured diffused lens
- High intensity LED colours
- Internal resistor - voltage options
- Sealed to IP67 - weatherproof
- Durable to shock and vibration



524 SERIES

- Ø8.1mm mounting
- Robust stainless steel housing
- Coloured diffused lens
- High intensity LED colours
- Internal resistor - voltage options
- Sealed to IP67 - weatherproof
- Durable to shock and vibration



525 SERIES

- Ø8.1mm mounting
- Bright nickel plated brass housing
- White lens - good on/off ratio
- Multi LED colours - single indicator
- Input 12Vdc - 4 wire termination
- Sealed to IP67 - weatherproof
- Durable to shock and vibration



528 SERIES

- Ø12.7mm (½") mounting
- Robust stainless steel housing
- Coloured diffused lens
- High intensity LED colours
- Internal resistor - voltage options
- Sealed to IP67 - weatherproof
- Durable to shock and vibration



531 SERIES

- Ø12.7mm (½") mounting
- Bright nickel plated brass housing
- Coloured diffused lens
- High intensity LED colours
- Bi-polar AC/DC - voltage options
- Sealed to IP67 - weatherproof
- Durable to shock and vibration



534 SERIES

- Ø8.1mm mounting
- Robust stainless steel housing
- Coloured diffused lens
- High intensity LED colours
- Bi-polar AC/DC - voltage options
- Sealed to IP67 - weatherproof
- Durable to shock and vibration

SEALED LED PANEL INDICATORS (CONT'D)



604 SERIES

- Ø5.0mm mounting
- Bright nickel plated brass housing
- Smoked lens - good on/off ratio
- High intensity LED colours
- Voltage options - wire termination
- Sealed to IP67 - weatherproof
- Durable to shock and vibration



612 SERIES

- Ø6.35mm (¼") mounting
- Black anodised aluminium housing
- Smoked lens - good on/off ratio
- High intensity LED colours
- Internal resistor - voltage options
- Sealed to IP67 - weatherproof
- Durable to shock and vibration



665 SERIES

- Ø8.5mm mounting
- Hard anodised aluminium housing
- Unique PTFE panel seal
- High intensity LED colours
- 20mA operation - wire termination
- Sealed to IP68-10psi weatherproof
- Durable to harsh environments



671 SERIES

- Ø25.4mm (1") mounting
- Black anodised aluminium housing
- Raised diffused lens
- High intensity LED colours
- High voltage 24Vac/DC - 440Vac/DC
- Sealed to IP67 - weatherproof
- Durable to shock and vibration



677 SERIES

- Ø8.1mm mounting
- Black anodised aluminium housing
- Smoked lens - good on/off Ratio
- High intensity LED colours
- Internal resistor - voltage options
- Sealed to IP67 - weatherproof
- Durable to shock and vibration



690 SERIES

- Ø9.6mm (¾") mounting
- Black anodised aluminium housing
- UL certified - No: E349017
- High intensity LED colours
- Voltage input: 8-48Vac/DC bi-polar
- Sealed to IP67 - weatherproof
- Durable to shock and vibration



696 SERIES

- Ø6.1mm countersunk mounting
- Black anodised aluminium housing
- Coloured diffused lens
- High intensity LED colours
- Internal resistor - voltage options
- Sealed to IP67 - weatherproof
- Durable to shock and vibration



698 SERIES

- Ø8.1mm mounting
- Black anodised aluminium housing
- Smoked lens - good on/off Ratio
- High intensity LED colours
- Bi-polar AC/DC - voltage options
- Sealed to IP67 - weatherproof
- Durable to shock and vibration



699 SERIES

- Ø12.7mm (½") mounting
- Black anodised aluminium housing
- Coloured diffused lens
- High intensity LED colours
- Bi-polar AC/DC - voltage options
- Sealed to IP67 - weatherproof
- Durable to shock and vibration